

Chlorine gas pressure reducing valve M 3480 C



- Capacity: up to 200 kg/h
- Assures steady operating pressure
- Spring-loaded double diaphragm system

GENERAL

The M 3480 C gas chlorine pressure reducing valve is used to sink down the unregulated gas pressure to a steady operating gas pressure. The pressure reducing valve secures pressure independent operation of Vacuum regulator and prevents, in relation to pressure and temperature changes, liquefaction of chlorine gas.

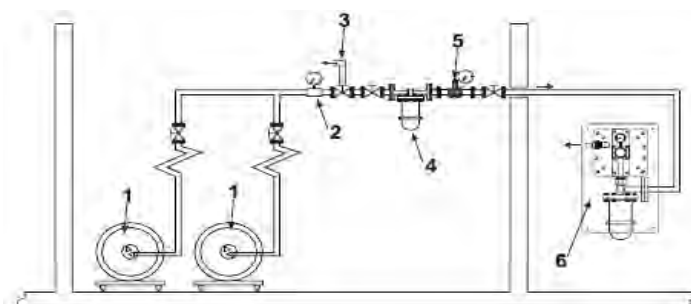
OPERATION PRINCIPLE

Through the adjustable screw the valve cone can be lifted above the valve seat within defined limits, so that the operating pressure can be set to any value between 2 and 3 bar for Cl₂. Pressure fluctuations are compensated by the spring-loaded double diaphragm system, so that the operating pressure is kept constant (at constant flow).

If the operating pressure exceeds the set value, the spring-cone diaphragm system enables the valve to close.

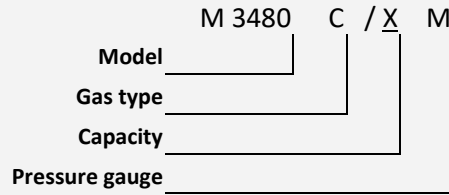
INSTALLATION

The gas chlorine pressure reducing valve is always mounted in a chlorine system, so the installation depends very much on the system. When taken from the packing box, the valve must be mounted as soon as possible, in other case it must be stored in a dry place. No moisture should enter the valve! A valve has two flanges and is mounted in the chlorine gas system pressure line with counter flanges and tightens up with screws. The valve must be mounted to the wall or to a construction with the attached L-piece. If the pressure gauge is mounted onto the valve, than it must be mounted before the valve is mounted. To do that, remove the plug screw. Prepare the pressure gauge and put some special chlorine gas resistant glue on the screw. Screw the pressure gauge in and remove the surplus glue with the rag. Watch how the scale is turned. Now the correct pressure can be set.



1. One ton chlorine drum
2. Chlorine gas pressure gauge
3. Chlorine gas Safety valve – exhaust to neutralization chamber
4. Chlorine gas filter
5. Chlorine gas reducing valve
6. Vacuum regulator 20 kg/hr

ORDER CODES



OPTIONS:

- Gas type: "C" - Cl₂, "CO2" - CO₂, "S" - SO₂, "N" - NH₃
- Capacity:
 - 40 up to 40 kg/h
 - 200 up to 200 kg/h
- Pressure Gauge: if selected letter »M« is written in the model number

TECHNICAL DATA



Nominal pressure: 16 bar
Output pressure adjustable: 0-3 bar (Cl₂)
Weight: 12,5kg
Materials:
 Diaphragm: Silver
 Valve seat: PVDF for Cl₂
 Spring: Hastelloy C, silver-plated
 O-Rings: Viton for Cl₂
 Enclosure: Brass for Cl₂

Optional: Output gas pressure gauge
 Connection: R1/4", range 0-16 bar

Connections

up to 40 kg/h
 Inlet Flange DN20 EN 1092-1/11, Type D - Female (Groove Flange)
 Outlet flange DN20 EN 1092-1/11, Type C - Male (Tongue Flange)
up to 200 kg/h
 Inlet Flange DN25 EN 1092-1/11, Type D - Female (Groove Flange)
 Outlet flange DN25 EN 1092-1/11, Type C - Male (Tongue Flange)
Other connections on request!

MEASURE DRAWINGS

